



# The National Environmental Public Health Tracking Program

Jeffrey Shire

Team Lead

Environmental Health Tracking Branch  
National Center for Environmental Health

Centers for Disease Control and Prevention





# Background

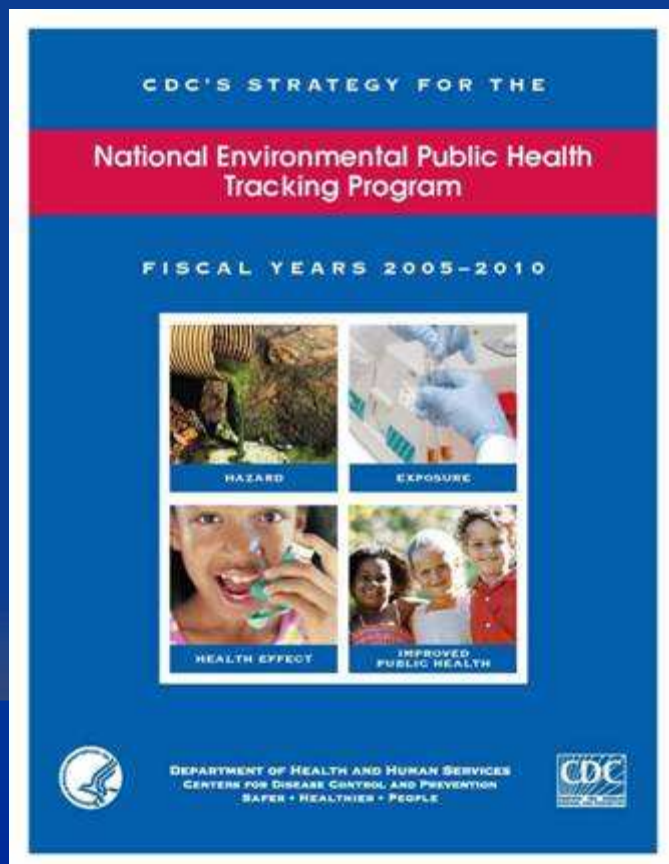


- CDC's National Environmental Public Health Tracking Program initiated in 2002
  - ◆ Congressional funding for “*development and implementation of a nationwide environmental health tracking network and capacity development in environmental health at State and local health Departments*”





# Our Mission



*To provide information from a nationwide network of integrated health and environmental data that drives actions to improve the health of communities*



# Our Vision – *Healthy Informed Communities*





# Tracking = Surveillance



- Environmental public health tracking is the ongoing, systematic collection, integration, analysis, interpretation of data about the following factors:
  - ◆ environmental hazards;
  - ◆ human exposure to environmental hazards;
  - ◆ health effects potentially related to exposure to environmental hazards.
- Data must be disseminated to plan, implement, and evaluate environmental public health action.



# Uses of Surveillance Data



- Quantify the magnitude of a problem
- Detect unusual trends, occurrences, relationships
- Identify populations at risk
- Generate hypotheses
- Provide data to test some hypotheses
- Direct and evaluate control and prevention measures
- Develop information for better clinical care and individual-health action
- Facilitate policy development

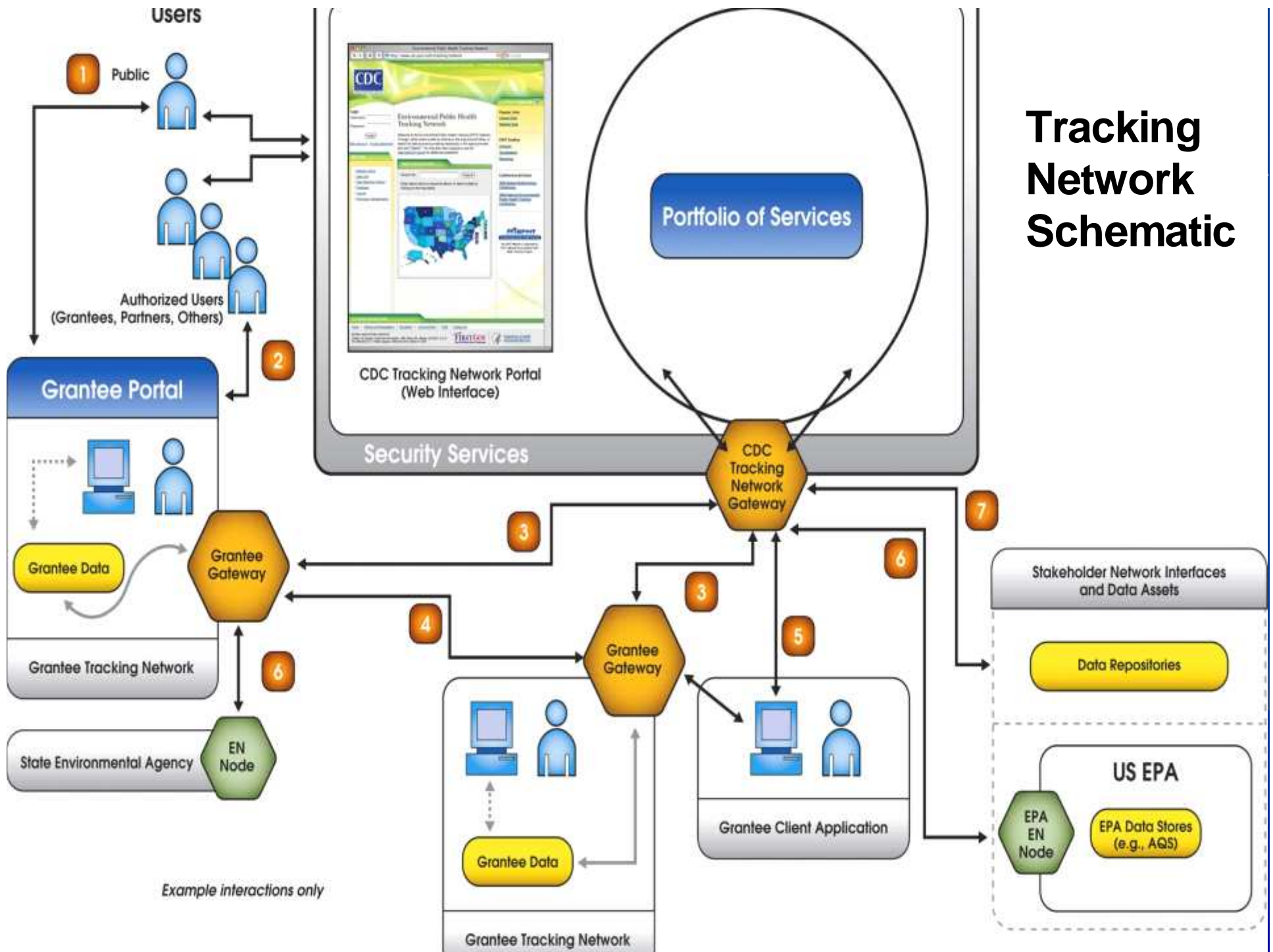


# Features of the National Environmental Public Health Tracking Network



- Web-based information system that exists at the local, state, and national level
- Provides access to nationally consistent data and measures of environmental health status
- Serves the public, environmental public health agencies, health care providers and researchers
- Protects privacy of individuals

# Tracking Network Schematic



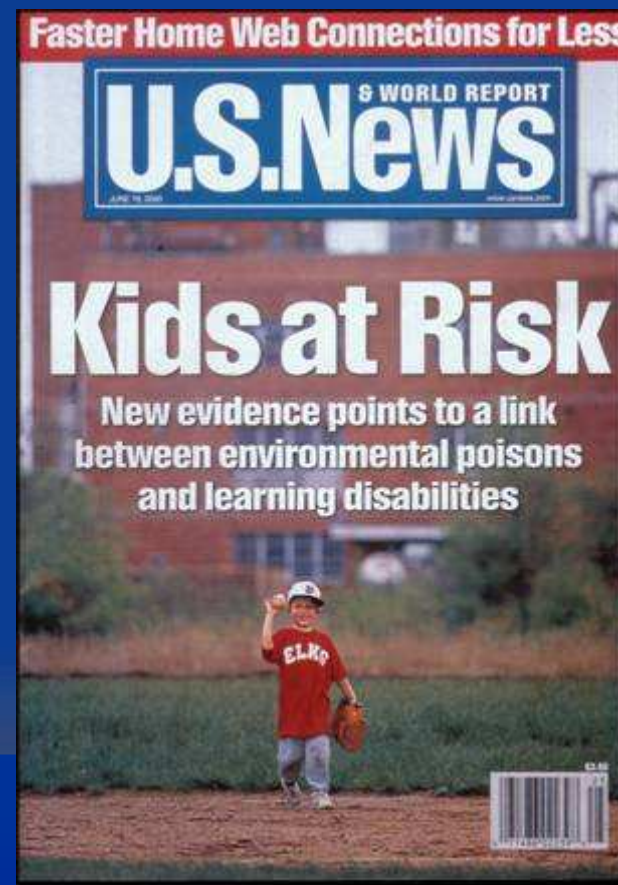




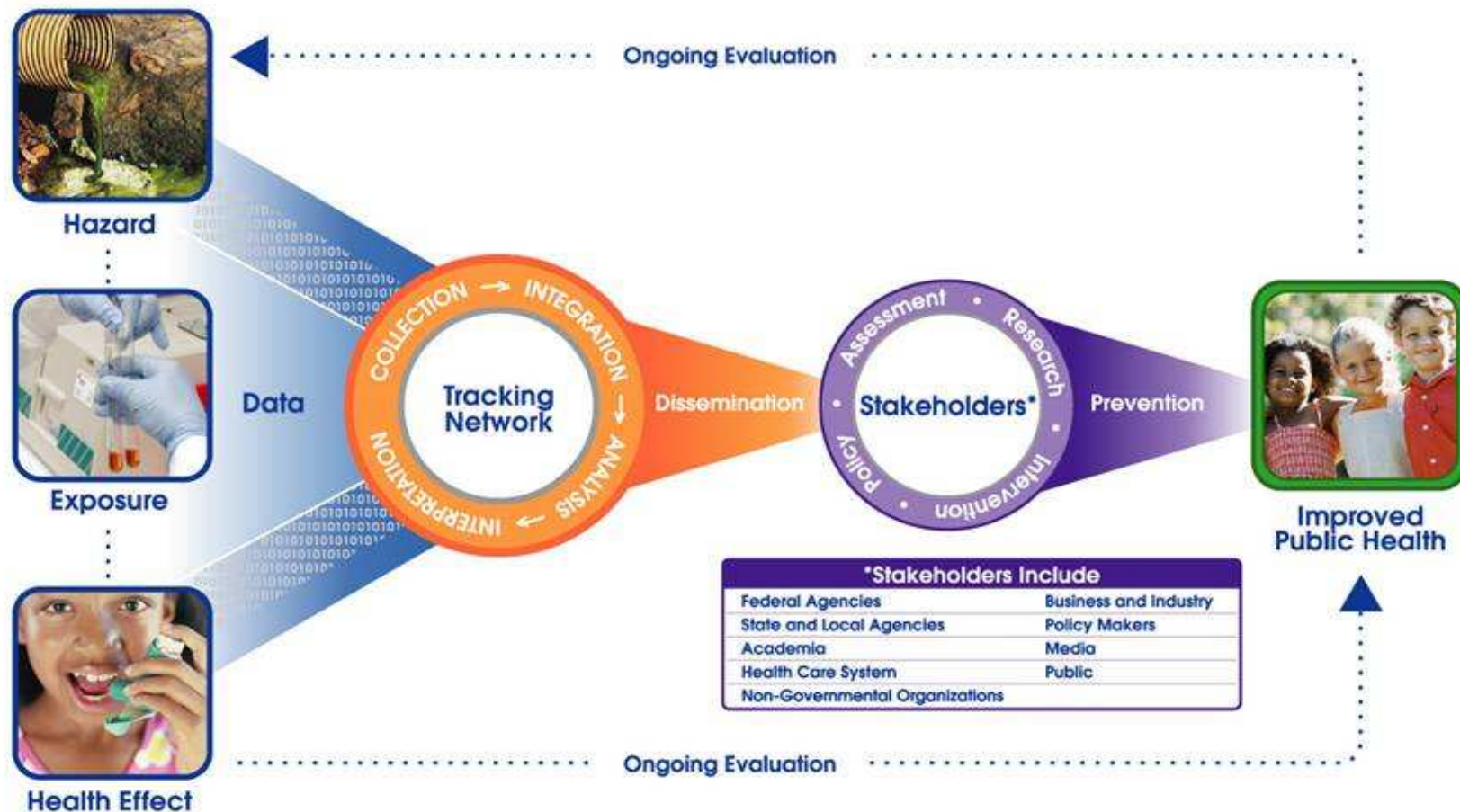
# Program Focus



- Chronic diseases and other health effects with possible environmental contributions
- Chemicals, physical agents, biomechanical stressors, biological toxins



# ENVIRONMENTAL PUBLIC HEALTH TRACKING



**\*Stakeholders include**

Federal Agencies	Business and Industry
State and Local Agencies	Policy Makers
Academia	Media
Health Care System	Public
Non-Governmental Organizations	

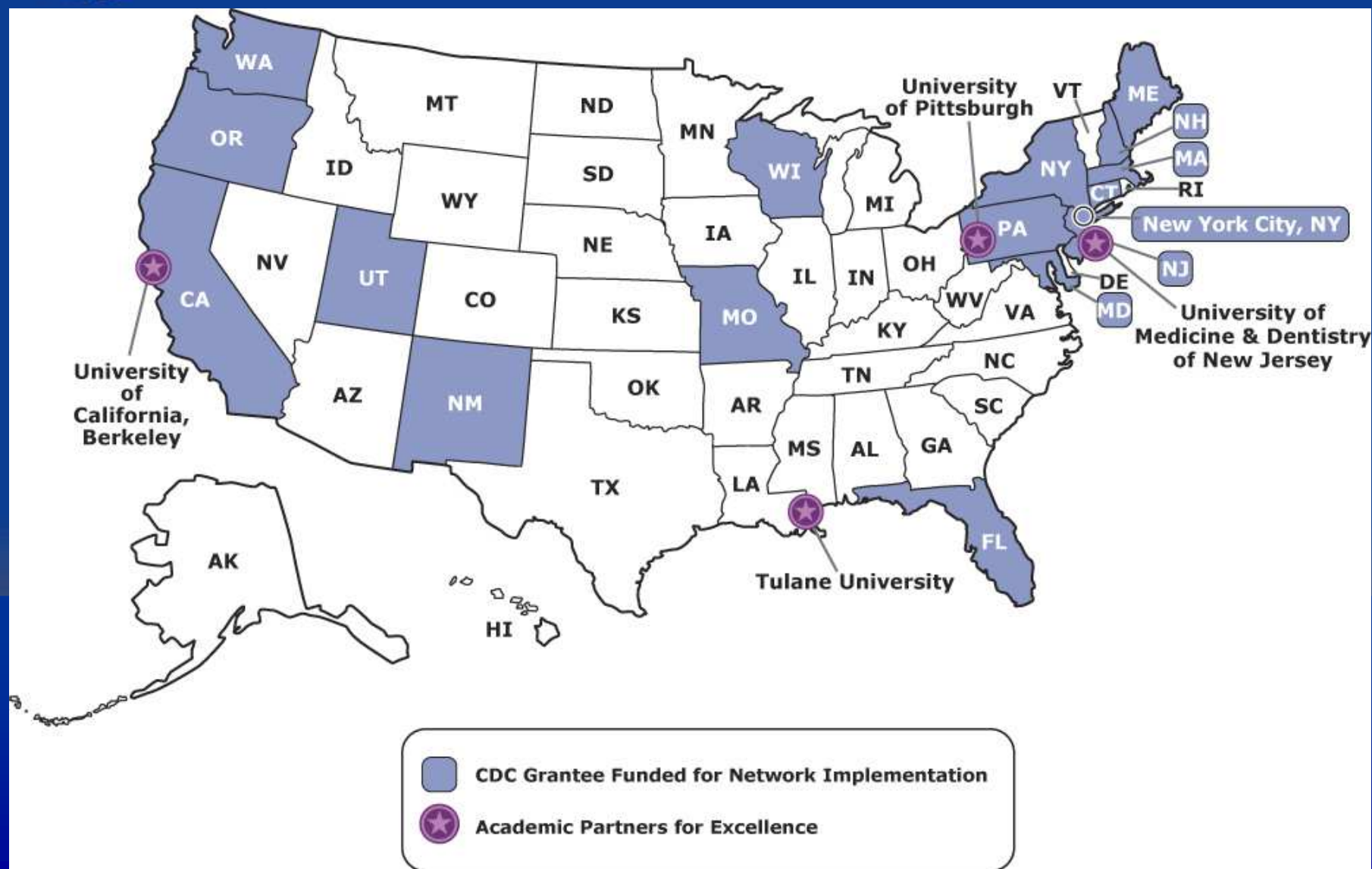


DEPARTMENT OF HEALTH AND HUMAN SERVICES  
CENTERS FOR DISEASE CONTROL AND PREVENTION  
SAFER • HEALTHIER • PEOPLE





# CDC's Tracking Grantees FY 2006





# Current Focus



- Network Implementation
  - ◆ Core Content Areas including:
    - Air – PM2.5 and Ozone
    - Birth Defects and Birth Outcomes
    - Cancer
    - Carbon Monoxide Poisonings
    - Childhood Blood Lead
    - Hospitalizations for Asthma and Myocardial Infarctions
    - Water



## Environmental Health

### Environmental Hazards & Health Effects Program

#### Tracking Program

- > [Tracking Home](#)
- > [About the Program](#)
- > [Communications Library](#)
- > [Communicate with the Program](#)
- > [Conferences & Meetings](#)
- > [Data Resources](#)
- > [EPHT Network](#)
- > [Partnerships](#)
- > [Policy & Legislation](#)
- > [Program Grants & Contacts](#)
- > [Publications](#)
- > [Related Programs](#)
- > [Special Projects](#)

## ENVIRONMENTAL HAZARDS & HEALTH EFFECTS

# National Environmental Public Health Tracking Program

### IN THE SPOTLIGHT



#### CDC's Strategy for the National Environmental Public Health Tracking Program [\(PDF, 2.2 Mb\)](#)

Defines the vision, mission, and five goals that set the direction of the EPHT Program



#### EPHT Partnerships

Find out what organizations and agencies are working with CDC to achieve EPHT Program goals ...[more](#)



#### HELIX: Atlanta

Learn about development and testing of EPHT-applicable methods in 5 metropolitan Atlanta counties ...[more](#)

#### About the Program

Background, Vision, At a Glance, Program in Brief, Conceptual Diagram ...[more](#)

#### Communications Library

- [Email this page](#)
- [Printer friendly version](#)

#### Quick Links

- > [National Center for Environmental Health \(NCEH\)](#)

#### Key Resources

[Mini-Monograph in Environmental Health Perspectives](#)

#### Programs & Campaigns

[HELIX: Atlanta](#)

[CDC-Funded Tracking Projects](#)

[National Biomonitoring Program](#)

[Environmental Public Health Indicators Project](#)



For more information: [www.cdc.gov/nceh/tracking](http://www.cdc.gov/nceh/tracking)

Contact us: [EPHT@cdc.gov](mailto:EPHT@cdc.gov)